

Shed for Rent to San Mauro Torinese Area: Pescarito



1.000 sqm

Pescarito Autoporto, facing Corso Lombardia and near the bus stop, 300 meters from the ring road entrance with ample parking in front, offers for rent a warehouse of approximately 1,000 sq m. The space is divided as follows:

Ground floor: 815 sq m warehouse plus 60 sq m of office space for a total of 875 sq m; First floor: 100 sq m mezzanine, suitable for use as a showroom or similar; Basement: 60 sq m of changing rooms and toilets; Fenced outdoor area of 250 sq m. Good internal condition, complete with electrical system and heating.

Property details

Ref.: 14249

Reason: Rent

Type: Shed

Region: Piemonte

Province: Torino

Municipality: San Mauro Torinese

Area: Pescarito

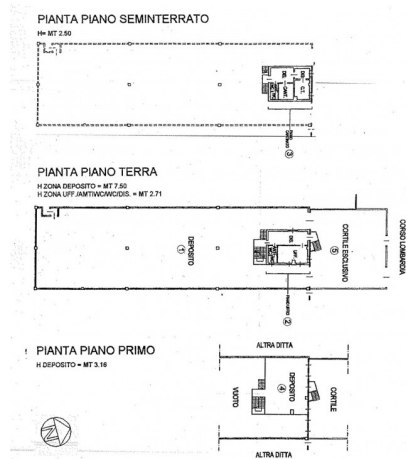
Price: € 4.500

Total sq.m.: 1.000 sqm

Il presente stampato ha valore puramente indicativo e non costituisce elemento contrattuale nè presupposto contrattuale.

Chiusano & C. Torino

Via Pastrengo, 29 - Torino (TO) - Phone number 0115682858
chiusano@chiusano.com - <https://www.chiusano.com>
V.A.T. 03113370013



Il presente stampato ha valore puramente indicativo e non costituisce elemento contrattuale nè presupposto contrattuale.

Chiusano & C. Torino

Via Pastrengo, 29 - Torino (TO) - Phone number 0115682858

chiusano@chiusano.com - <https://www.chiusano.com>

V.A.T. 03113370013