

## for Sale to Sauze d'Oulx



### 47 sqm | Bathrooms: 1 | Bedrooms: 1 | Rooms: 1

Apartment in good condition located in a quiet and panoramic mountain setting, ideal as a holiday home or investment. The property offers a functional layout with an entrance hall, hallway, welcoming living/sleeping area with kitchenette, bathroom, and panoramic terrace perfect for enjoying splendid views and relaxing outdoors.

The property includes a convenient parking space in the shared garage, included in the price.

An ideal solution for those who want to experience the mountains in every season, just a stone's throw from nature and hiking.

Cat. A/2 Land registry income 232.42 euros.

Land registry updates may be in progress. Therefore, all the above information does not constitute contractual elements or conditions.

### Property details

**Ref.:** 13972

**Reason:** Sale

**Type:**

**Region:** Piemonte

**Province:** Torino

**Municipality:** Sauze d'Oulx

**Price:** € 115.000

**Total sq.m.:** 47 sqm

**Bedrooms:** 1

**Bathrooms:** 1

Il presente stampato ha valore puramente indicativo e non costituisce elemento contrattuale nè presupposto contrattuale.

**Chiusano & C. Torino**

Via Pastrengo, 29 - Torino (TO) - Phone number 0115682858

chiusano@chiusano.com - <https://www.chiusano.com>

V.A.T. 03113370013

**Rooms:** 1

**Age Construction:** 1977

**Condo fee:** € 62

**Available:** Yes

---



Il presente stampato ha valore puramente indicativo e non costituisce elemento contrattuale nè presupposto contrattuale.

**Chiusano & C. Torino**

Via Pastrengo, 29 - Torino (TO) - Phone number 0115682858

chiusano@chiusano.com - <https://www.chiusano.com>

V.A.T. 03113370013



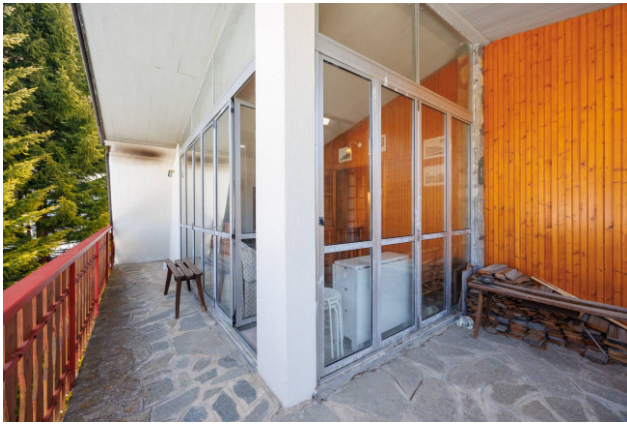
Il presente stampato ha valore puramente indicativo e non costituisce elemento contrattuale nè presupposto contrattuale.

**Chiusano & C. Torino**

Via Pastrengo, 29 - Torino (TO) - Phone number 0115682858

chiusano@chiusano.com - <https://www.chiusano.com>

V.A.T. 03113370013



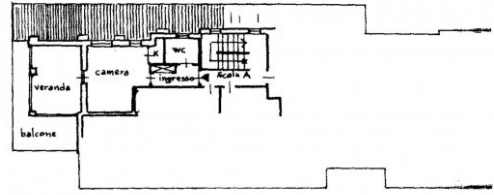
Il presente stampato ha valore puramente indicativo e non costituisce elemento contrattuale nè presupposto contrattuale.

**Chiusano & C. Torino**

Via Pastrengo, 29 - Torino (TO) - Phone number 0115682858

chiusano@chiusano.com - <https://www.chiusano.com>

V.A.T. 03113370013



PIANO 2° F.T. MANSARDATO

H = 245 265

ORIENTAMENTO



PLANIMETRIA INDICATIVA

Il presente stampato ha valore puramente indicativo e non costituisce elemento contrattuale nè presupposto contrattuale.

**Chiusano & C. Torino**

Via Pastrengo, 29 - Torino (TO) - Phone number 0115682858

chiusano@chiusano.com - <https://www.chiusano.com>

V.A.T. 03113370013