

Apartment for Sale to Pino Torinese

Area: Pino Torinese



176 sqm | Bathrooms: 3 | Bedrooms: 3 | Rooms: 5

Pino Torinese, a priceless view, surrounded by greenery and tranquility. Bright and panoramic apartment on the top floor of an elegant building with elevator access. Approximately 176 square meters spread over two levels, it comprises: an entrance hall leading to a living room with access to a terrace overlooking the valley, a spacious eat-in kitchen, a bathroom, and a service balcony. An internal staircase leads to the upper floor, which comprises two spacious and bright bedrooms, a large bathroom, a single bedroom, a second bathroom, and a laundry room. Parquet flooring is featured throughout, along with electric interior and exterior blinds with wind and sun sensors. Electric and armored shutters, an alarm system, air conditioning, and a security door. A cellar and a garage complete the property.

Land registry updates may be pending. Therefore, all the above information does not constitute contractual elements or conditions.

Property details

Ref.: 12197

Reason: Sale

Type: Apartment

Region: Piemonte

Province: Torino

Municipality: Pino Torinese

Il presente stampato ha valore puramente indicativo e non costituisce elemento contrattuale nè presupposto contrattuale.

Chiusano & C. Torino

Via Pastrengo, 29 - Torino (TO) - Phone number 0115682858
chiusano@chiusano.com - <https://www.chiusano.com>
V.A.T. 03113370013

Area: Pino Torinese **Price:** € 330.000

Total sq.m.: 176 sqm **Bedrooms:** 3

Bathrooms: 3 **Rooms:** 5

Total Floor: 4 **Lift:** Yes

Age Construction: 1966 **Condo fee:** € 216

Available: Yes **Garage:** Single

Features

Air-Conditioned Parquet Jacuzzi

Shower Wooden Window Frames Shutters



Il presente stampato ha valore puramente indicativo e non costituisce elemento contrattuale nè presupposto contrattuale.

Chiusano & C. Torino

Via Pastrengo, 29 - Torino (TO) - Phone number 0115682858

chiusano@chiusano.com - <https://www.chiusano.com>

V.A.T. 03113370013



Il presente stampato ha valore puramente indicativo e non costituisce elemento contrattuale nè presupposto contrattuale.

Chiusano & C. Torino

Via Pastrengo, 29 - Torino (TO) - Phone number 0115682858

chiusano@chiusano.com - <https://www.chiusano.com>

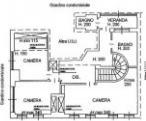
V.A.T. 03113370013



PIANTA PIANO TERZO (4 p.f.t.)
H m = 2,80 m



PIANTA PIANO QUARTO (5 p.f.t.)
H m = 2,40 m



PLANIMETRIA INDICATIVA



Il presente stampato ha valore puramente indicativo e non costituisce elemento contrattuale nè presupposto contrattuale.

Chiusano & C. Torino

Via Pastrengo, 29 - Torino (TO) - Phone number 0115682858

chiusano@chiusano.com - <https://www.chiusano.com>

V.A.T. 03113370013